



**BRAKE MOTORS**

Frame size 80mm sq. (3.15 in. sq.)

Single-Phase, Three-Phase

**25W (1/30 HP)**

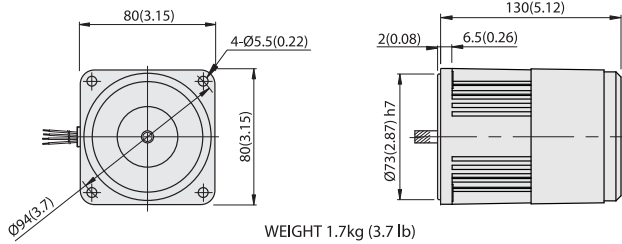
LEAD WIRE TYPE

**DIMENSIONS**

**SPEED-TORQUE CURVE**

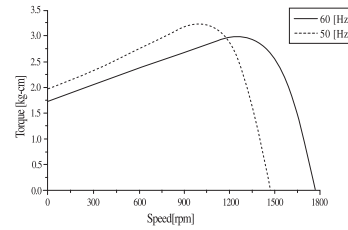
Unit : mm(inch)

**E8R25P□LE(1ph) / E8I25P□LE(3ph)**

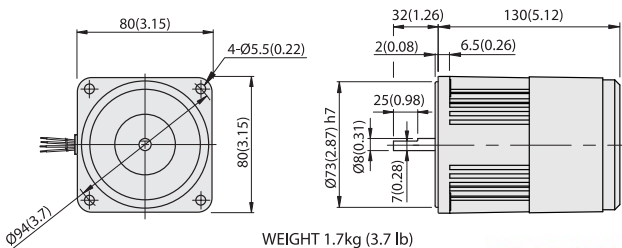


WEIGHT 1.7kg (3.7 lb)

Single phase E8R25□□LE

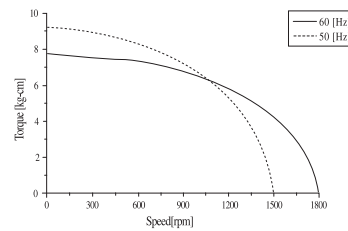


**E8R25D□LE(1ph) / E8I25D□LE(3ph)**



WEIGHT 1.7kg (3.7 lb)

Three phase E8I25□□LE



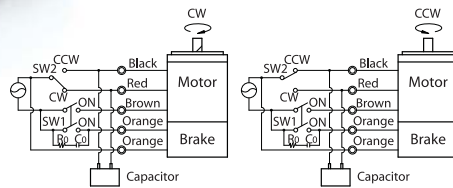
[www.MuGuL.com](http://www.MuGuL.com)



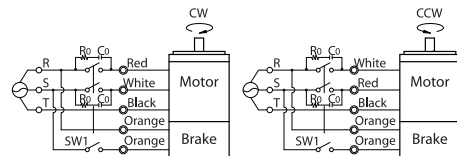
**CONNECTION DIAGRAMS**

Standard or with T.P

Single Phase



Three Phase



**SPECIFICATIONS**

The direction of rotation is seen from the end of motor shaft.

30 MIN. DUTY (only 3Ø, CONTINUOUS DUTY), INSULATION CLASS A or E, 4POLES

Model	Output		Voltage (V)	Frequency (Hz)	Rated				Starting Torque			Magnetic Brake			Capacitor (µF)			
	(HP)	(W)			Input (W)	Current (A)	Torque (kg-cm)	(N-m)	(oz-in)	Speed (rpm)	(kg-cm)	(N-m)	(oz-in)	Torque (kg-cm)		(N-m)	(oz-in)	Current (A)
E8R25□CLE	1/30	25	1Ø100	50	65	0.60	1.95	0.191	27.08	1250	1.6	0.157	22.22	4	0.392	55.55	0.09	10
60				65	0.67	1.6	0.157	22.22	1550	1.6	0.157	22.22	4	0.392	55.55	0.09		
E8R25□DLE	1/30	25	1Ø200	50	65	0.28	1.95	0.191	27.08	1250	1.6	0.157	22.22	4	0.392	55.55	0.09	2.5
60				65	0.33	1.6	0.157	22.22	1550	1.6	0.157	22.22	4	0.392	55.55	0.09		
E8R25□BLE	1/30	25	1Ø220	60	80	0.37	1.6	0.157	22.22	1550	2.2	0.216	30.55	4	0.392	55.55	0.09	2.5
E8R25□ELE	1/30	25	1Ø115	60	65	0.65	1.53	0.150	21.25	1600	1.6	0.157	22.22	4	0.392	55.55	0.09	8
E8R25□XLE	1/30	25	1Ø220-240	50	70	0.29	1.95	0.191	27.08	1250	2.1	0.206	29.16	4	0.392	55.55	0.09	2
E8I25□ULE	1/30	25	3Ø200	50	70	0.26	1.9	0.186	26.39	1300	5.9	0.578	81.93	4	0.392	55.55	0.09	-
60				70	0.24	1.6	0.157	22.22	1550	4.7	0.461	65.27	4	0.392	55.55	0.09		
E8I25□TLE	1/30	25	3Ø220	50	70	0.3	1.85	0.181	25.69	1350	7.7	0.755	106.23	4	0.392	55.55	0.09	-
60				70	0.25	1.55	0.152	21.52	1600	6.1	0.598	84.71	4	0.392	55.55	0.09		

\*Model in grey screen represents the motors with THERMALLY PROTECTED according to UL regulation.

\*Model in dark grey screen represents the motors with THERMALLY PROTECTED according to CE regulation.

## GEARHEADS

Frame size 80mm sq. (3.15 in. sq.)

## METAL TYPE & BALL BEARING TYPE

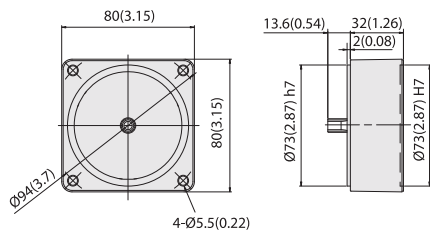
### DIMENSIONS

#### DECIMAL GEARHEAD

#### GEARHEAD

Unit : mm(inch)

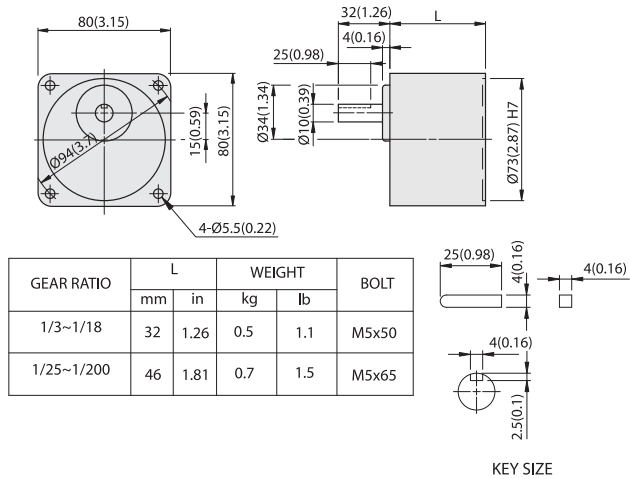
#### E8G10D



WEIGHT 0.4kg(0.88 lb)

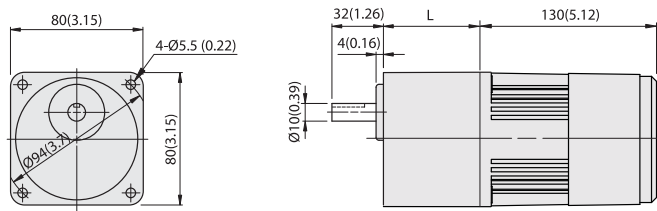


#### E8HK□M(B)



[www.MuGuL.com](http://www.MuGuL.com)

#### E8HK□M(B) + E8R25P□LE



### RATED TORQUE OF GEARHEAD

MODEL	Speed(rpm)	500	300	200	120	100	60	50	30	20	15	10	9	
		Ratio	50Hz	3	5	7.5	12.5	15	25	30	50	75	100	150
		60Hz	3.6	6	9	15	18	30	36	60	90	120	180	200
E8HK□M E8HK□B		kg-cm	4.7	7.9	11.8	19.7	23.7	35.6	42.7	64.4	80	80	80	80
		N-m	0.46	0.77	1.16	1.93	2.32	3.49	4.19	6.31	7.84	7.84	7.84	7.84
		oz-in	66	110	165	274	329	494	593	894	1111	1111	1111	1111

\* The normal torque is that the motor and gearhead are directly coupled.  
 \* Insert the denominator of reduction ratio in □ of gearhead model name.  
 \* Actual rotation speed is 2~15% less than synchronous speed.  
 \* ■ Color indicates that the rotation of gearhead shaft is in opposite direction as output shaft of motor.