

INDUCTION MOTORS

Frame size 90mm sq. (3.54 in. sq.)

120W (1/6 HP)

Single-Phase, Three-Phase

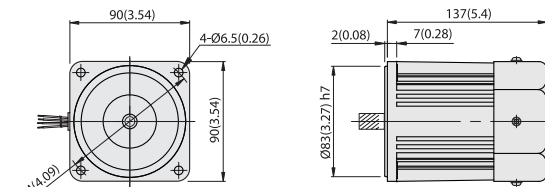
LEAD WIRE TYPE

DIMENSIONS

SPEED-TORQUE CURVE

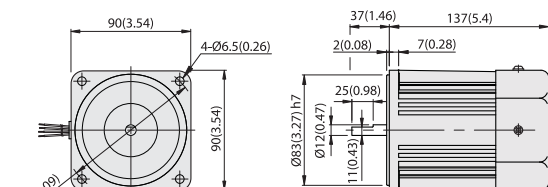
Unit : mm(inch)

E9I120P □ H



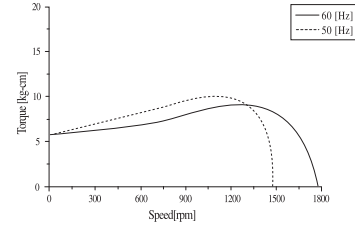
WEIGHT 3.2kg (7.1 lb)

E9I120D □

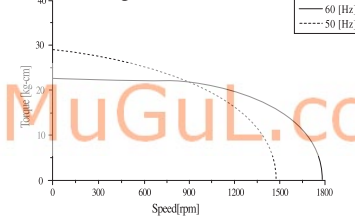


WEIGHT 3.2kg (7.1 lb)

Single phase E9I120 □ □



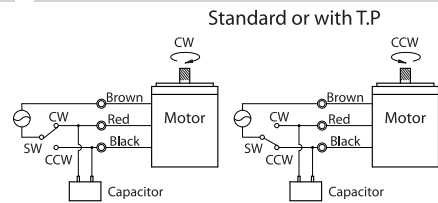
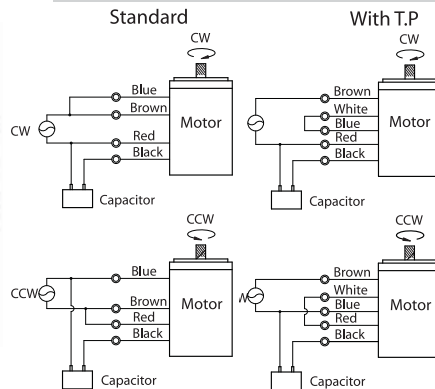
Three phase E9I120 □ □



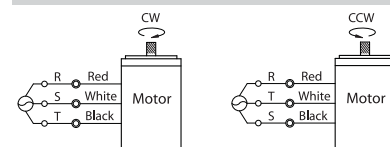
www.MuGuL.com

CONNECTION DIAGRAMS (4-lead wire type)

CONNECTION DIAGRAMS (3-lead wire type)



CONNECTION DIAGRAMS (3 phase)



The direction of rotation is seen from the end of motor shaft.

SPECIFICATIONS

CONTINUOUS DUTY, INSULATION CLASS A or E, 4POLES

Model	Output		Voltage (V)	Frequency (Hz)	Rated						Starting Torque			Capacitor (µF)
	(HP)	(W)			Input (W)	Current (A)	Torque (kg-cm, N-m, oz-in)			Speed (rpm)	(kg-cm)	(N-m)	(oz-in)	
E9I120 □ C	1/6	120	1 Ø 100	50	240	2.30	9.4	0.921	130.54	1250	6.1	0.598	84.71	30
				60	240	2.30	7.6	0.745	105.54	1550	6.1	0.598	84.71	
E9I120 □ D	1/6	120	1 Ø 200	50	240	0.95	9.4	0.921	130.54	1250	6.1	0.598	84.71	8
				60	240	1.10	7.6	0.745	105.54	1550	6.1	0.598	84.71	
E9I120 □ B	1/6	120	1 Ø 220	60	250	1.2	7.4	0.725	102.76	1600	6.8	0.666	94.43	7
E9I120 □ E	1/6	120	1 Ø 115	60	250	2.3	7.4	0.725	102.76	1600	5.9	0.578	81.93	25
E9I120 □ X	1/6	120	1 Ø 220-240	50	250	1.0	9.4	0.921	130.54	1250	6.8	0.666	94.43	7
E9I120 □ U	1/6	120	3 Ø 200	50	200	0.71	8.7	0.853	120.82	1350	22	2.156	305.51	-
				60	200	0.67	7.6	0.745	105.54	1550	17	1.666	236.08	
E9I120 □ T	1/6	120	3 Ø 200-230	50	240	0.88	8.7	0.853	120.82	1350	27	2.646	374.95	-
				60	240	0.82	7.4	0.725	102.76	1600	21	2.058	291.63	
E9I120 □ S	1/6	120	3 Ø 380-415	50	240	0.51	8.7	0.853	120.82	1350	27	2.646	374.95	-
				60	240	0.48	7.4	0.725	102.76	1600	21	2.058	291.63	
E9I120 □ R	1/6	120	3 Ø 440	50	240	0.45	8.7	0.853	120.82	1350	27	2.646	374.95	-
				60	240	0.41	7.4	0.725	102.76	1600	21	2.058	291.63	

* Model in grey screen represents the motors with THERMALLY PROTECTED according to UL regulation.
 * Model in dark grey screen represents the motors with THERMALLY PROTECTED according to CE regulation.
 * In case of some models certificated for export, the special cord like CE or UL is added after the existing model no. ex) E9I60I | XH-CE, E9I60I | EH-UL.
 * Insulation class for motors which acquired certificates for export is B.

GEARHEADS(POWERFUL TYPE)

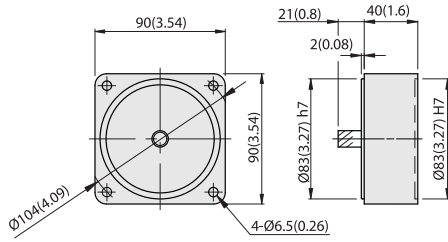
Frame size 90mm sq. (3.54 in. sq.)

BALL BEARING TYPE

DIMENSIONS

DECIMAL GEARHEAD

E9V10D

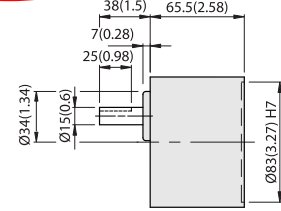
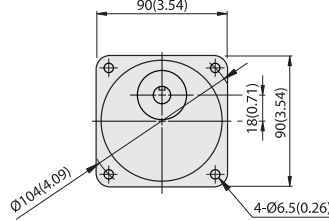


WEIGHT 0.6kg (1.3 lb)

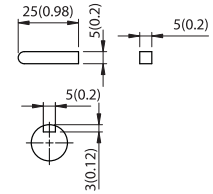
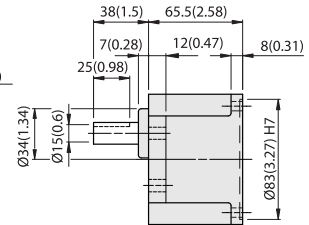
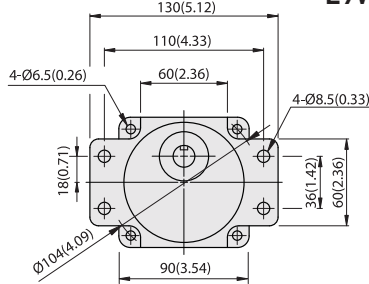
GEARHEAD

Unit : mm(inch)

E9VK□B



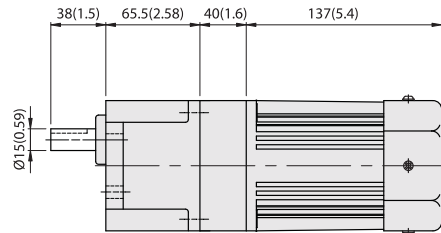
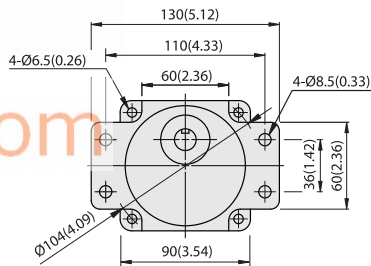
E9WK□B



KEY SIZE

MODEL	GEAR RATIO	WEIGHT		BOLT
		kg	lb	
E9VK□B	1/3~1/200	1.5	3.3	M6x95
E9WK□B	1/3~1/200	1.6	3.5	M6xL25

E9WK□B + E9V10D + E9I120P□H



RATED TORQUE OF GEARHEAD

MODEL	Speed(rpm)	Ratio	500	300	200	120	100	60	50	30	20	15	10	9	6	5	3	2	1
			50Hz	3	5	7.5	12.5	15	25	30	50	75	100	150	166.7	250	300	500	750
E9VK□B	kg-cm		22.8	38.1	57.1	85.8	102.9	155.1	186.1	200	200	200	200	200	200	200	200	200	200
E9WK□B	N-m		2.24	3.73	5.60	8.41	10.09	15.20	18.24	19.60	19.60	19.60	19.60	19.60	19.60	19.60	19.60	19.60	19.60
E9V10D(DECIMAL)	oz-in		317	529	793	1191	1429	2154	2585	2777	2777	2777	2777	2777	2777	2777	2777	2777	2777

With Decimal Gearhead

- * The normal torque is that the motor and gearhead are directly coupled.
- * Insert the denominator of reduction ratio in □ of gearhead model name.
- * Actual rotation speed is 2~15% less than synchronous speed.
- * Color indicates that the rotation of gearhead shaft is in opposite direction as output shaft of motor.